

Artecy

CROSS STITCH

Mini Carnations Heart



* Original image© T Clarke using Midjourney AI
Cross Stitch Design by Tereena Clarke.

Completed Size = 195w x 196h Stitches

14 Count, 14w x 14h inches (36cm x 36cm)

16 Count, 12.5w x 12.5h inches (32cm x 32cm)

18 Count, 11w x 11h inches (28cm x 28cm)

Uses 66 DMC cotton colours. Only full cross stitches are used in this pattern.

Pattern Instructions

* This pattern can be worked on any fabric type, colour or count you prefer. To work out the size of the finished article, take the number of stitches wide and high and divide it by the count of your fabric (e.g. 14,16,18 count aida etc) to get the size in inches. Times it by 2.54 to get centimetres. We have the sizes in inches shown on the previous page. Also leave at least a few inches of fabric around each side of the design to assist in framing. The higher the fabric count the smaller the completed project will be.

* To put the pattern together look in the top and bottom corners. The page numbers in brackets show which page number it joins up to. Page 1 always starts at the top left hand side of the pattern. Our pages also have a shaded grey section. This indicates a 3 row overlap from adjoining pages to assist with reading the pattern. PLEASE DO NOT RESTITCH THIS AREA.

* You should begin at the centre of the pattern. To find the centre of the pattern it is just a matter of laying the pattern out and locating the arrows at the top and left hand side of the patterns, they are determined by dividing the stitch numbers wide and high in half. Where the two points meet in the middle, that is the centre.

* If you need more assistance to find the middle of your pattern or the page layout, please see the notes section on the colour symbol chart. The easiest way to stitch this pattern, as it has multiple pages, is to stitch one page at a time.

* We suggest using two strands of floss for each stitch and one strand for backstitching if the pattern calls for it.

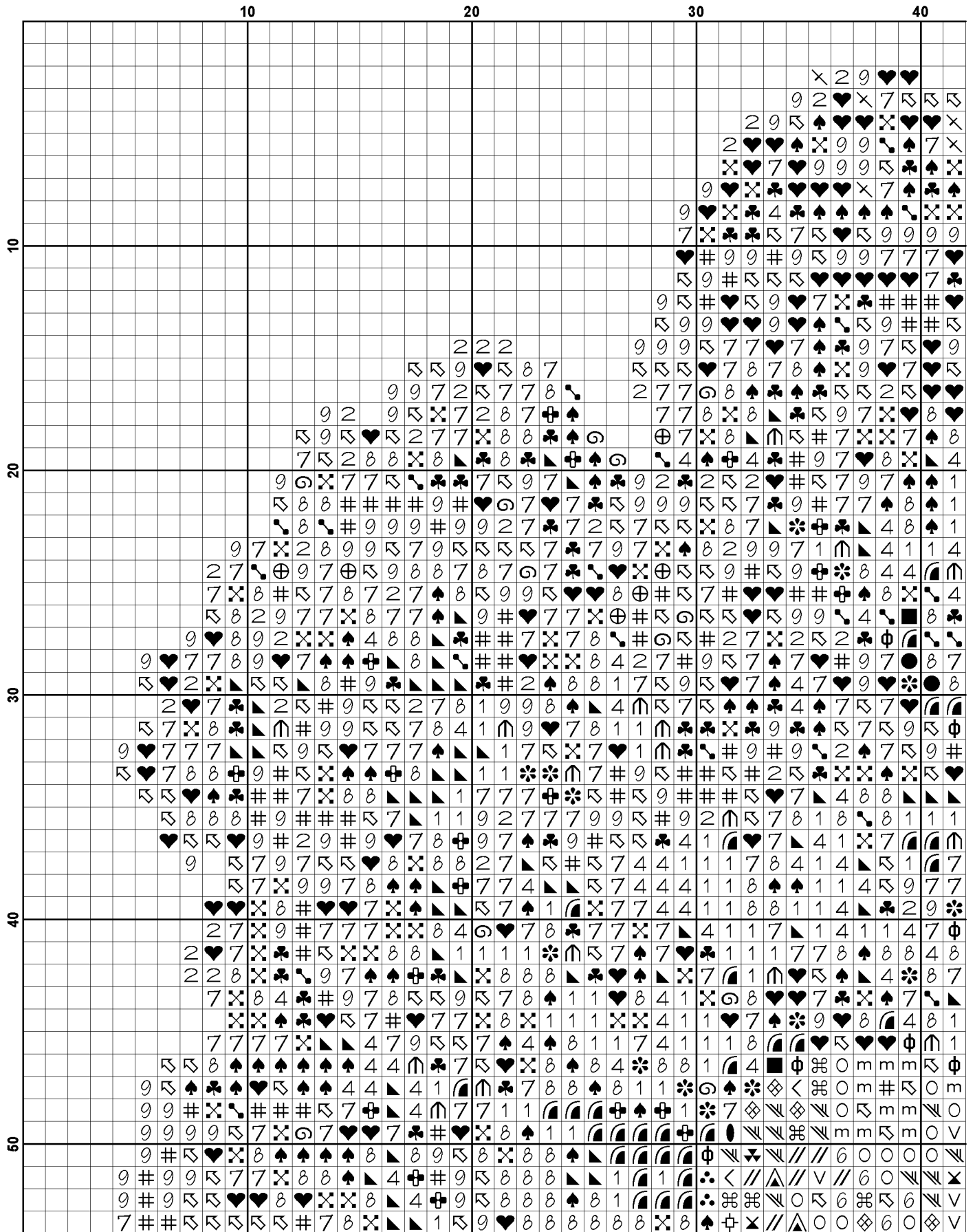
We hope you enjoy stitching our pattern.

Thanks and Best Wishes
Tereena Clarke

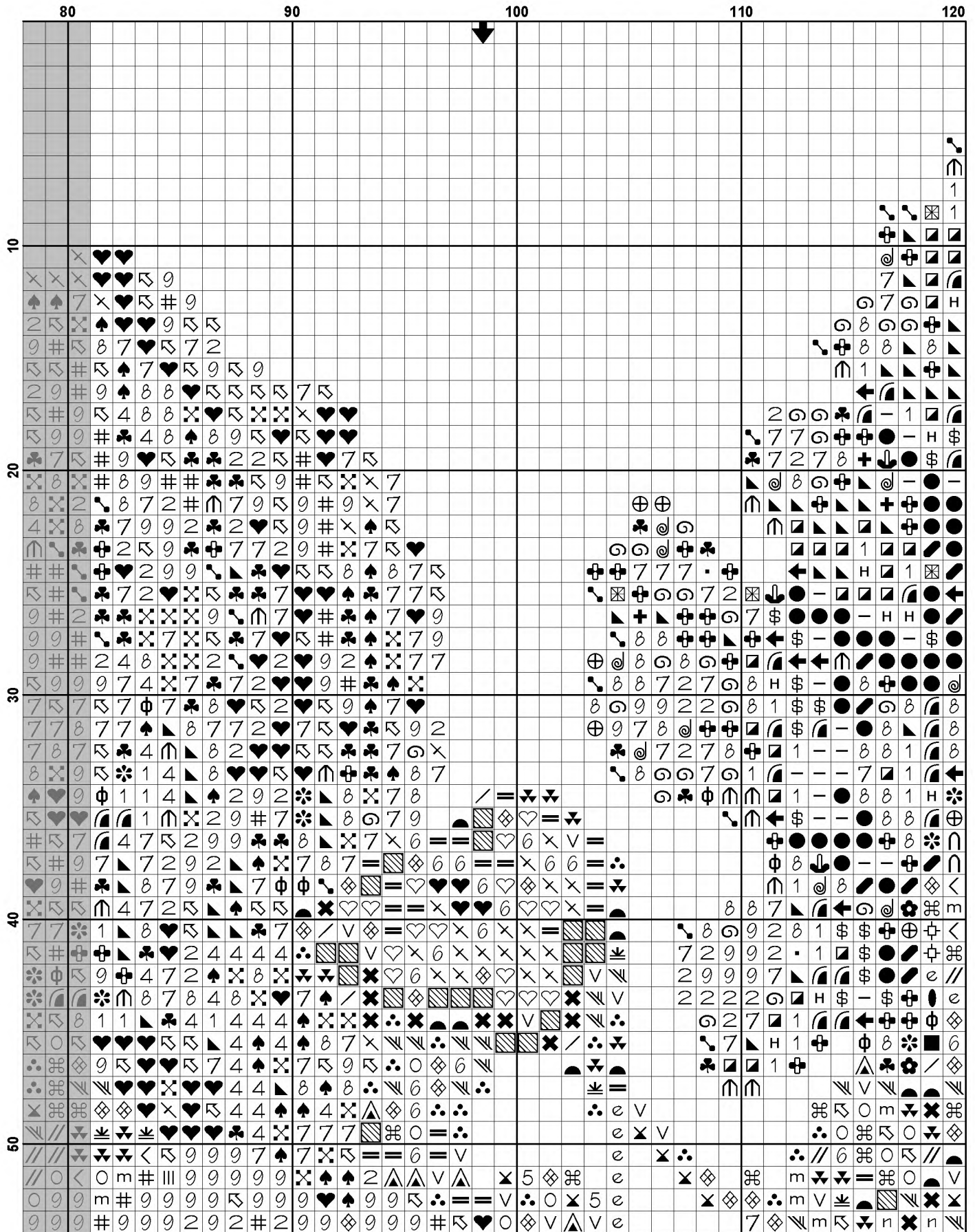
Artecy Cross Stitch
Po Box 3474
Tuggerah, NSW 2259
Australia

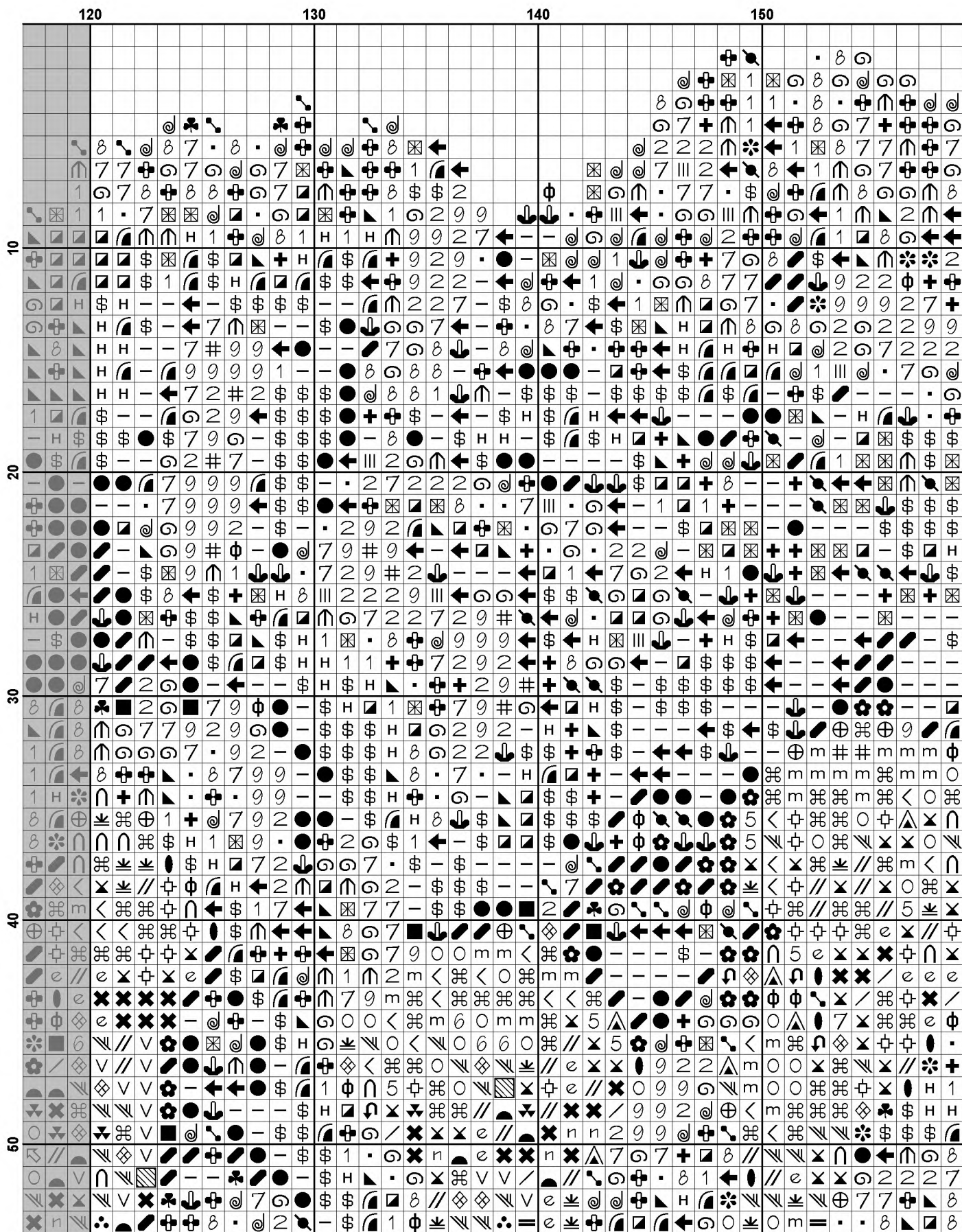
Websites: www.artecy.com and www.artecyshop.com
Email: artecy@artecy.com or stitch@artecyshop.com

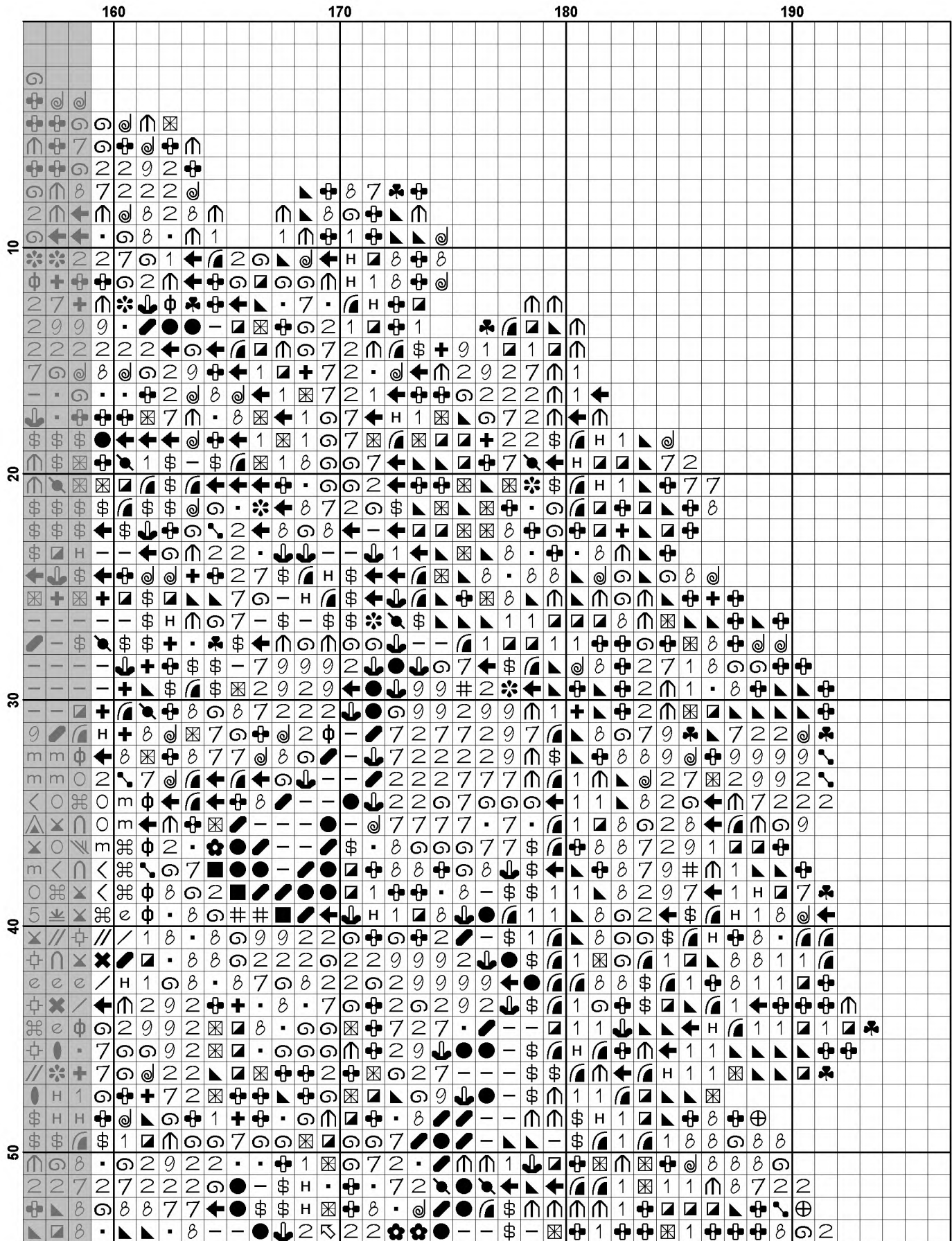
*Patterns are strictly for personal use only. It is against our copyright to make kits for sale from our designs or to sell, copy or redistribute this pattern in any form. You may not upload our patterns to any internet forums or groups or any other website. You may make 1 copy of this pattern for a working copy for your own personal use if needed.

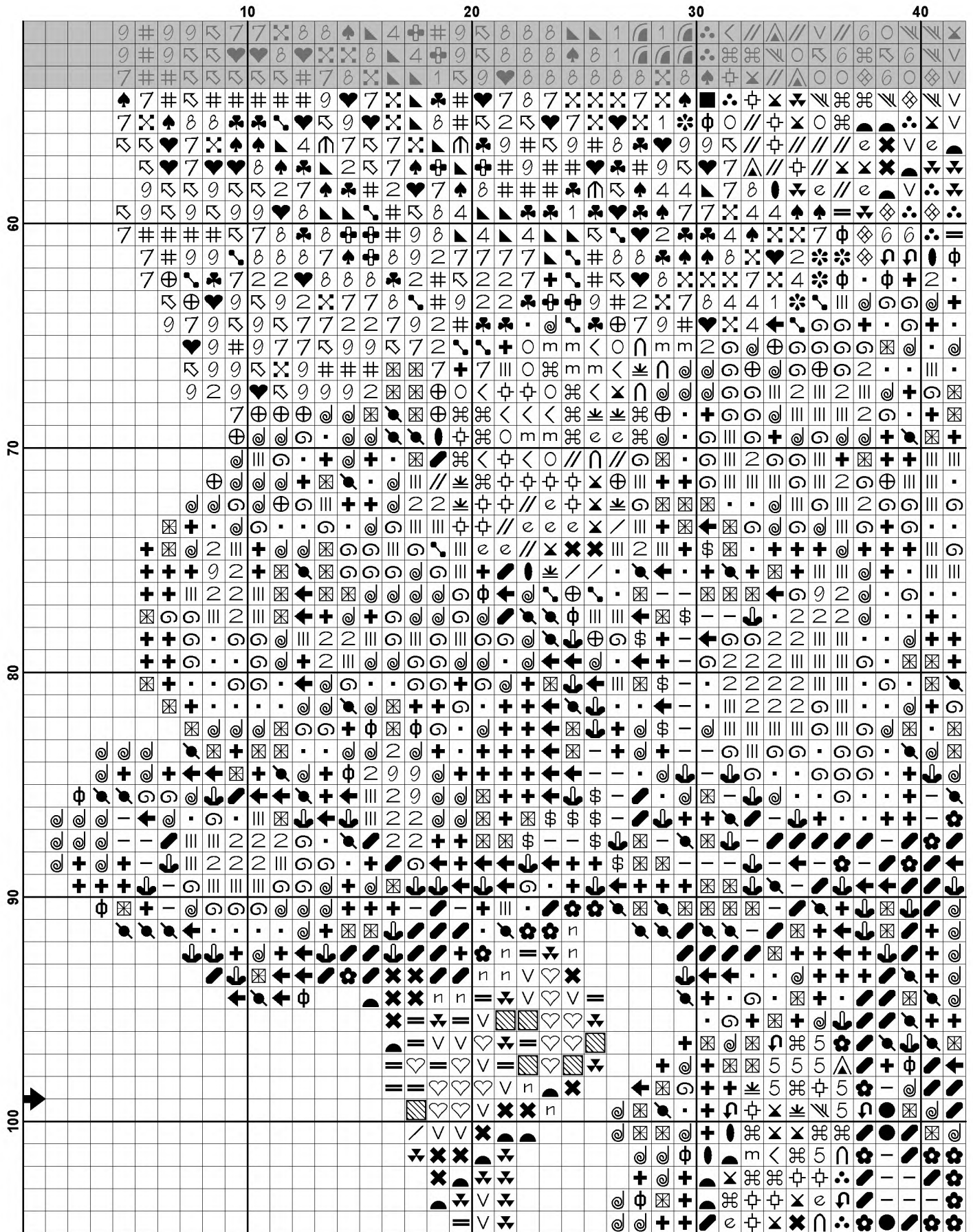


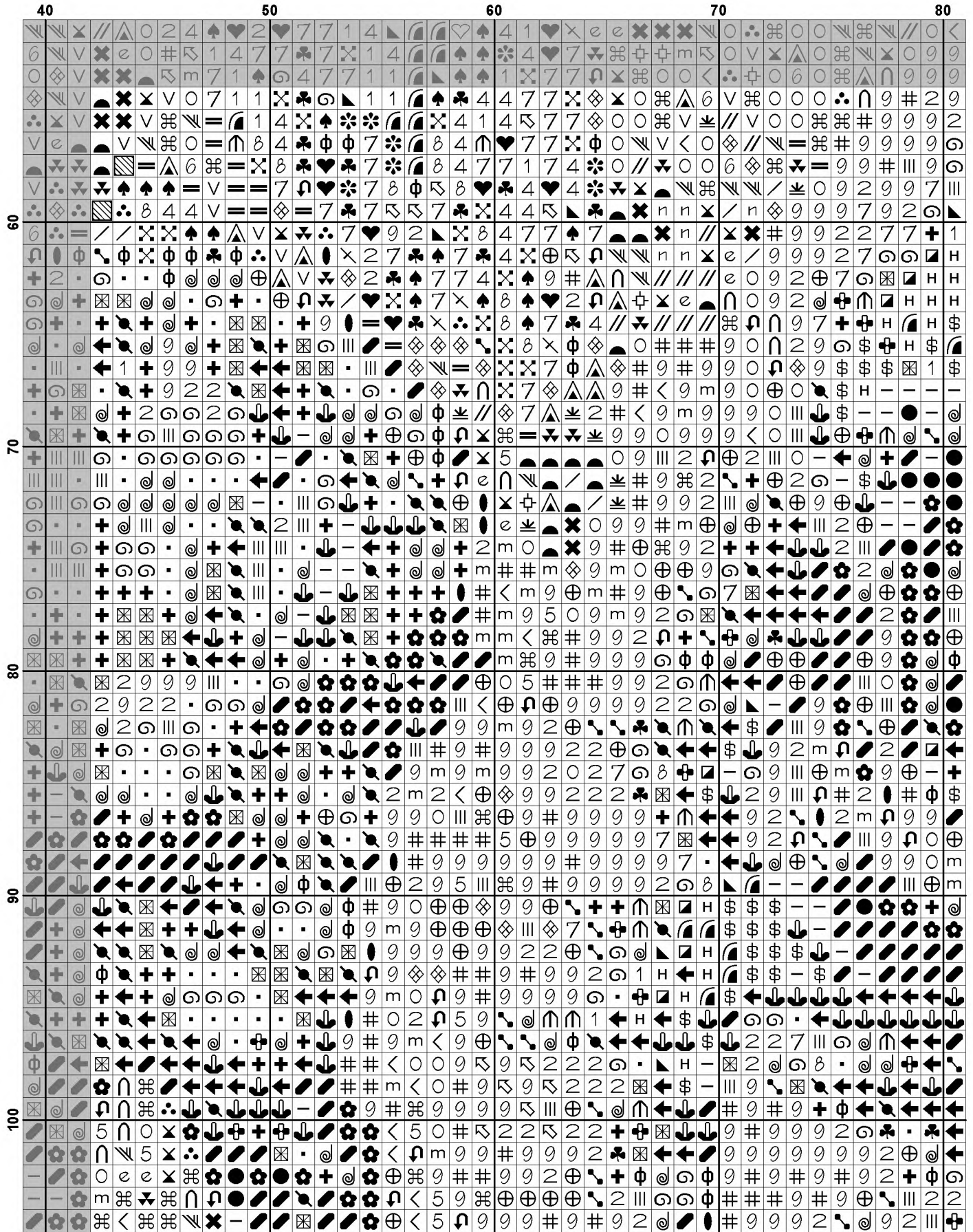
| | 40 | 50 | 60 | 70 | 80 |
|----|----|----|----|----|----|
| 10 | | | | | |
| 20 | | | | | |
| 30 | | | | | |
| 40 | | | | | |
| 50 | | | | | |

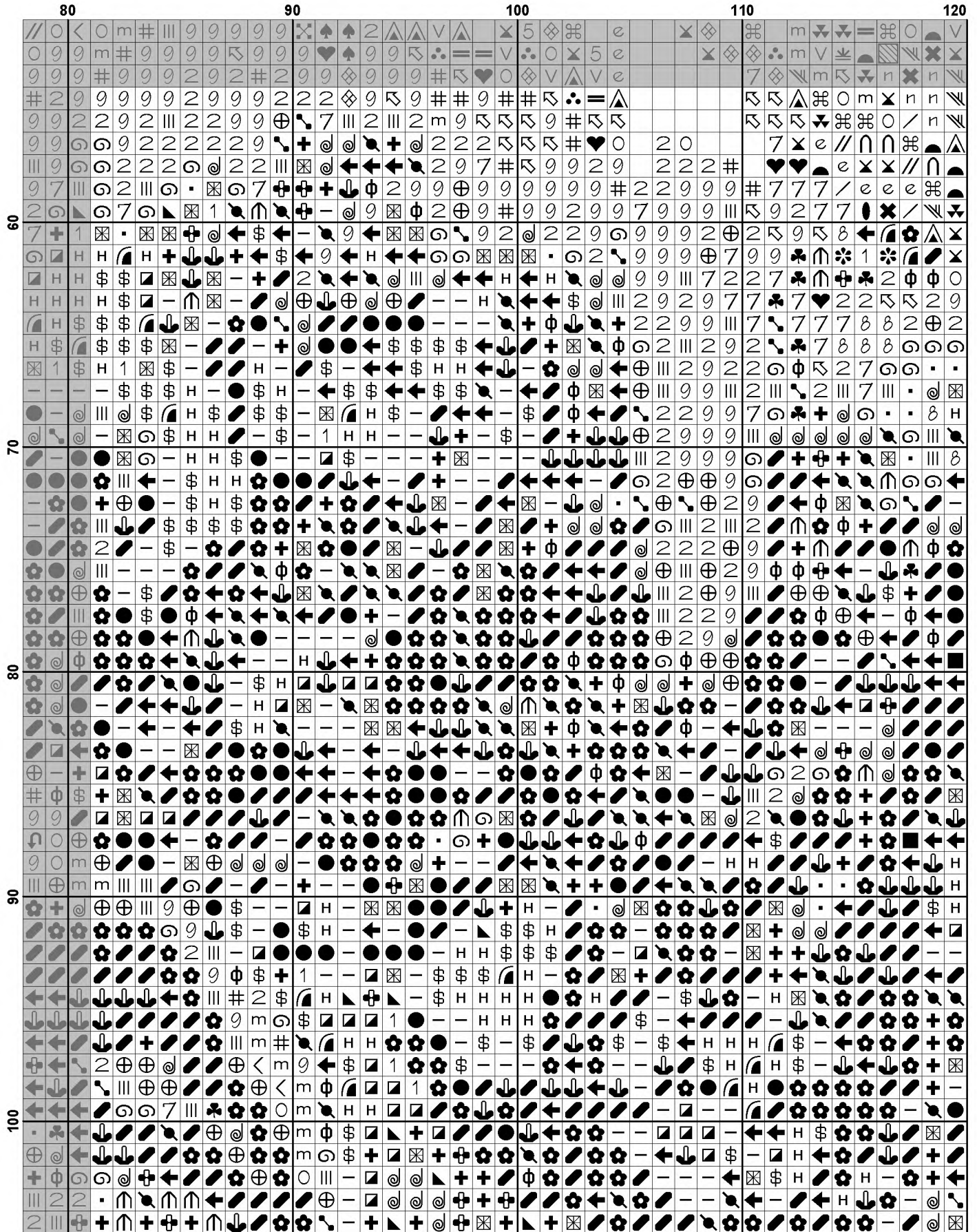


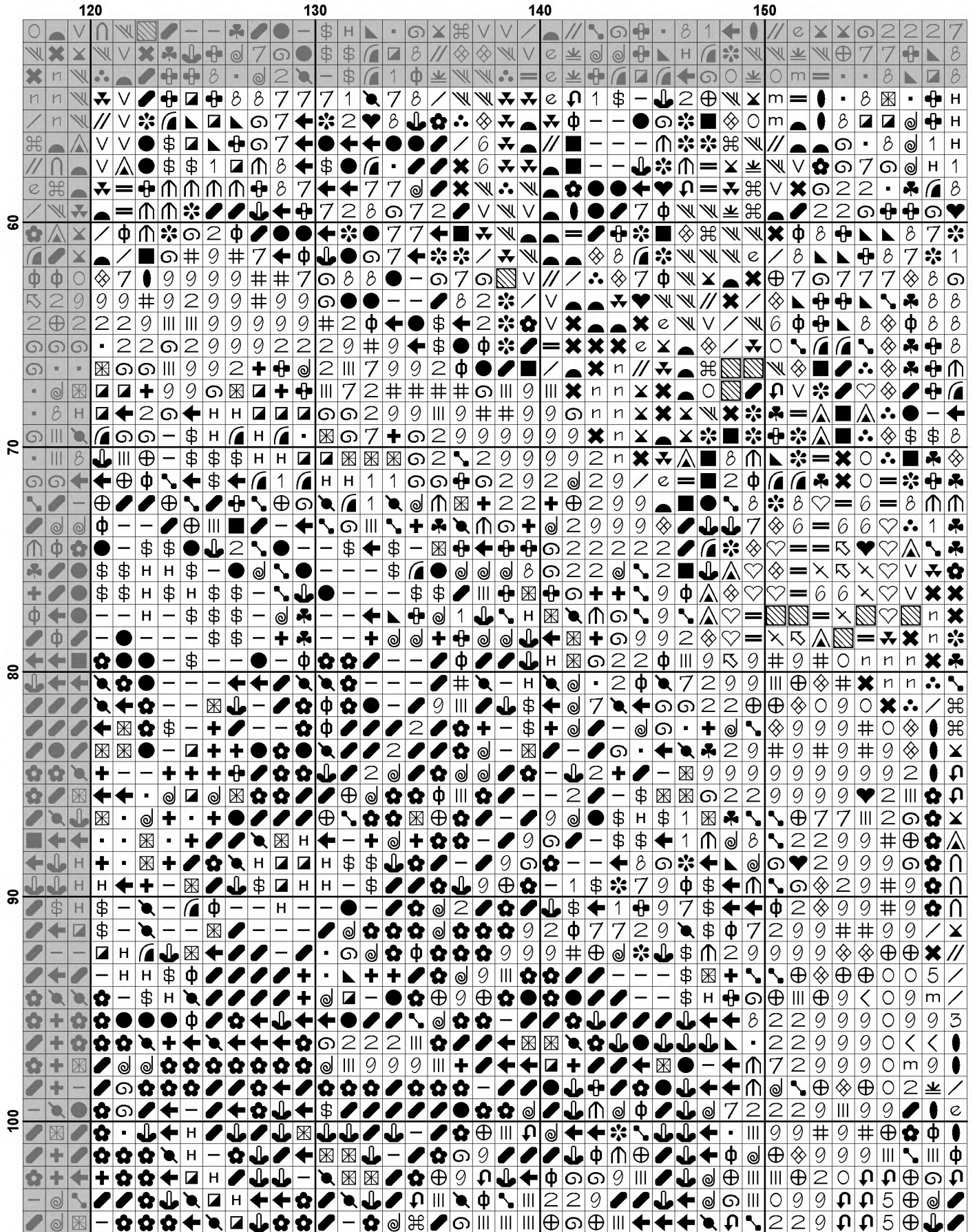


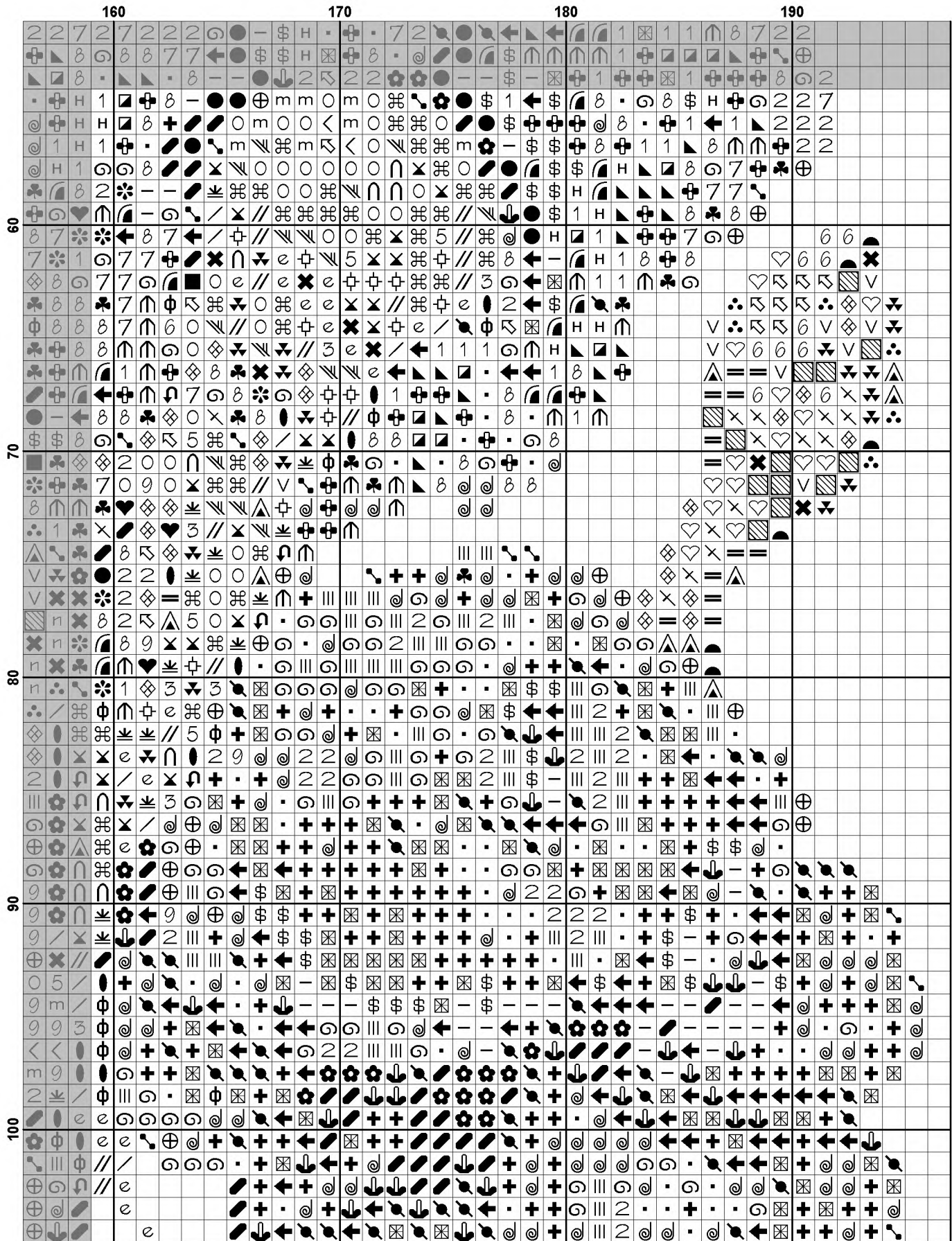


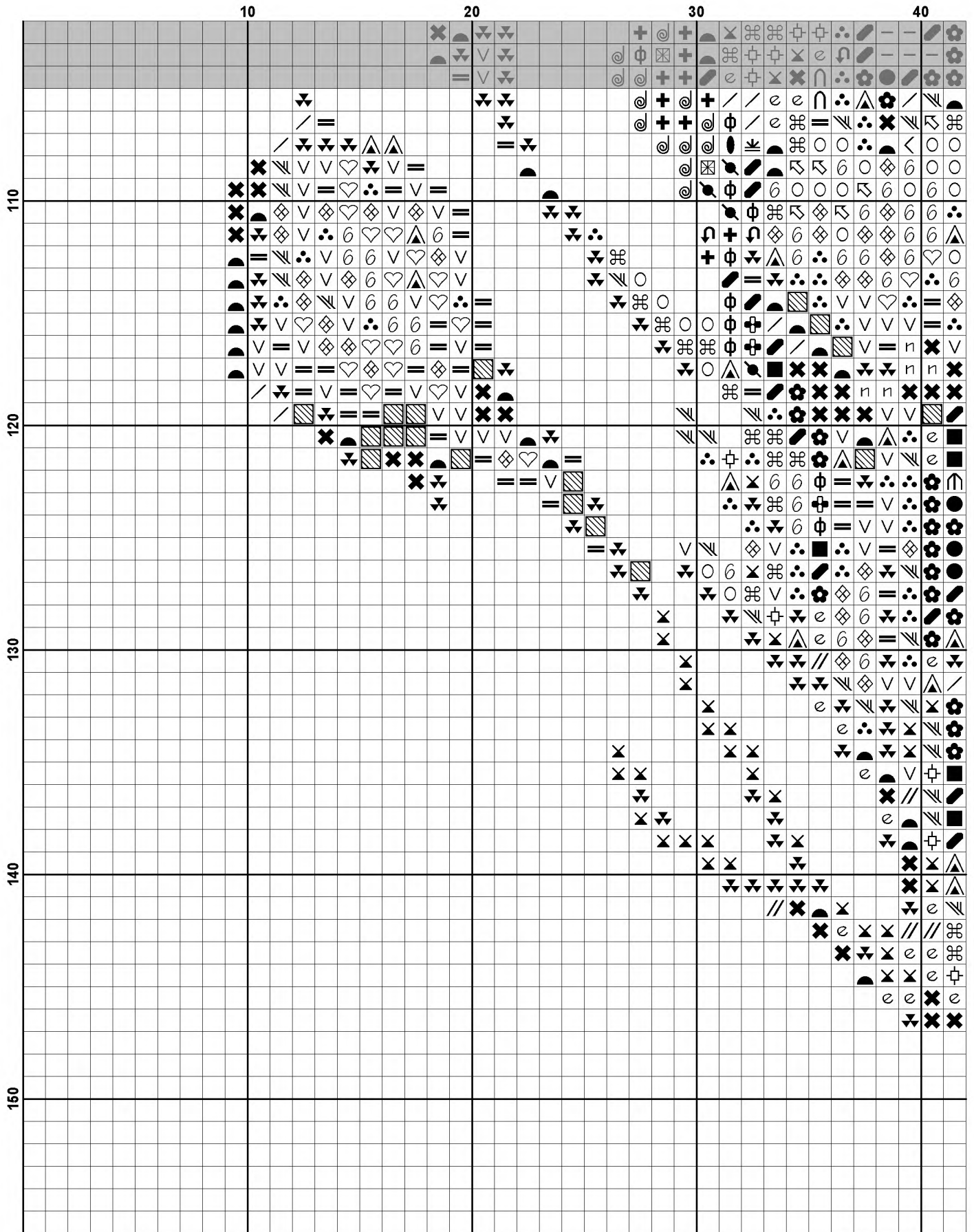


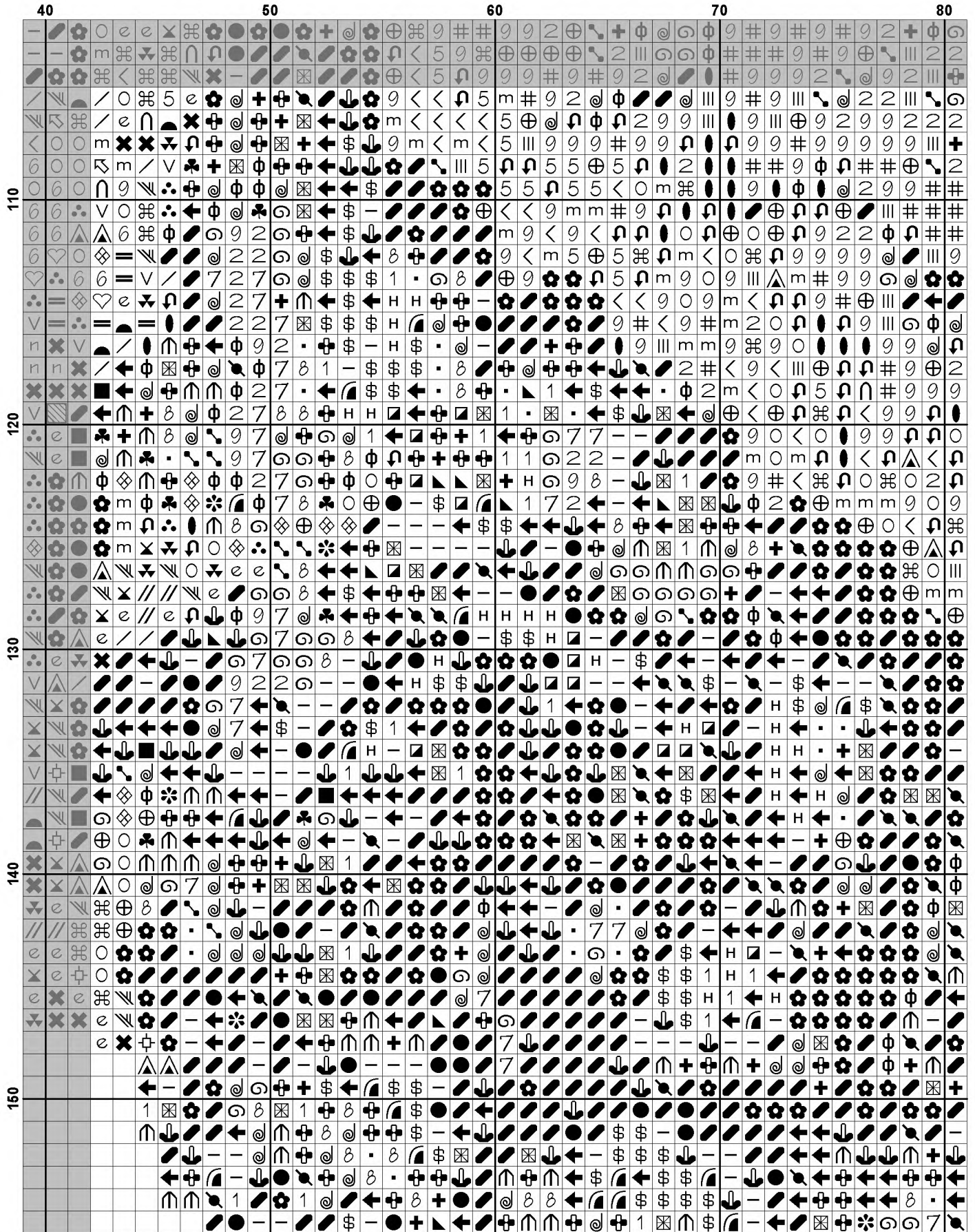


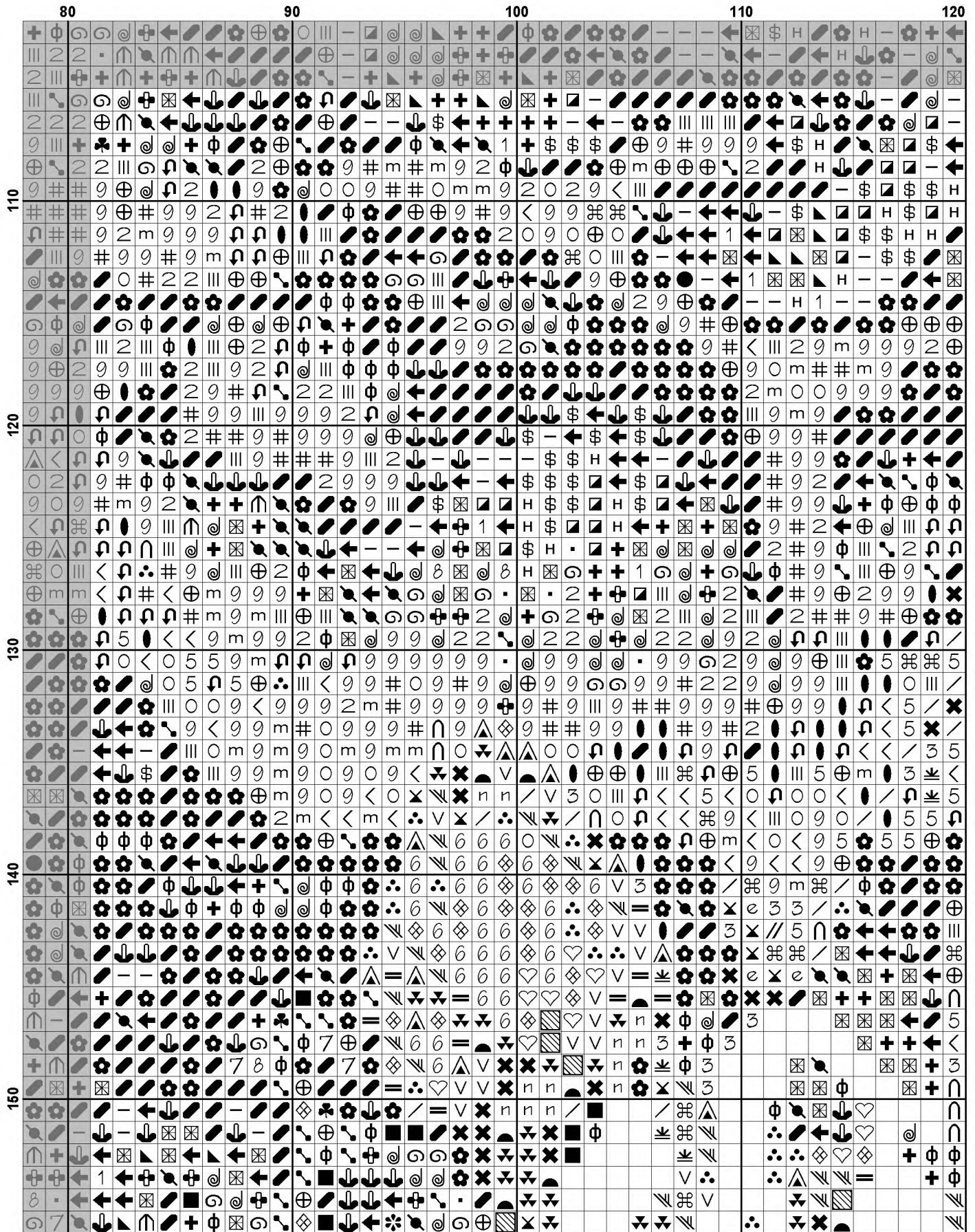


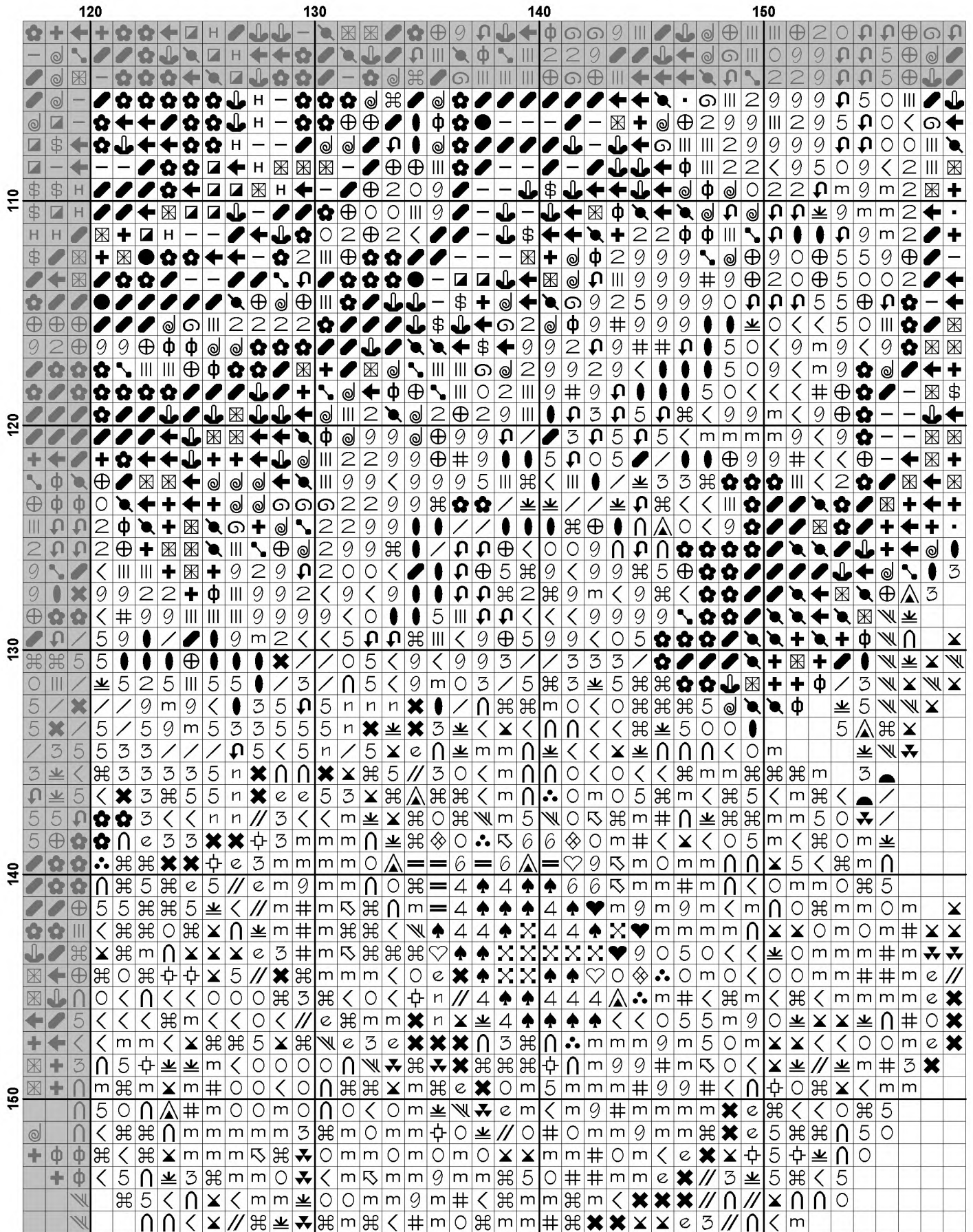


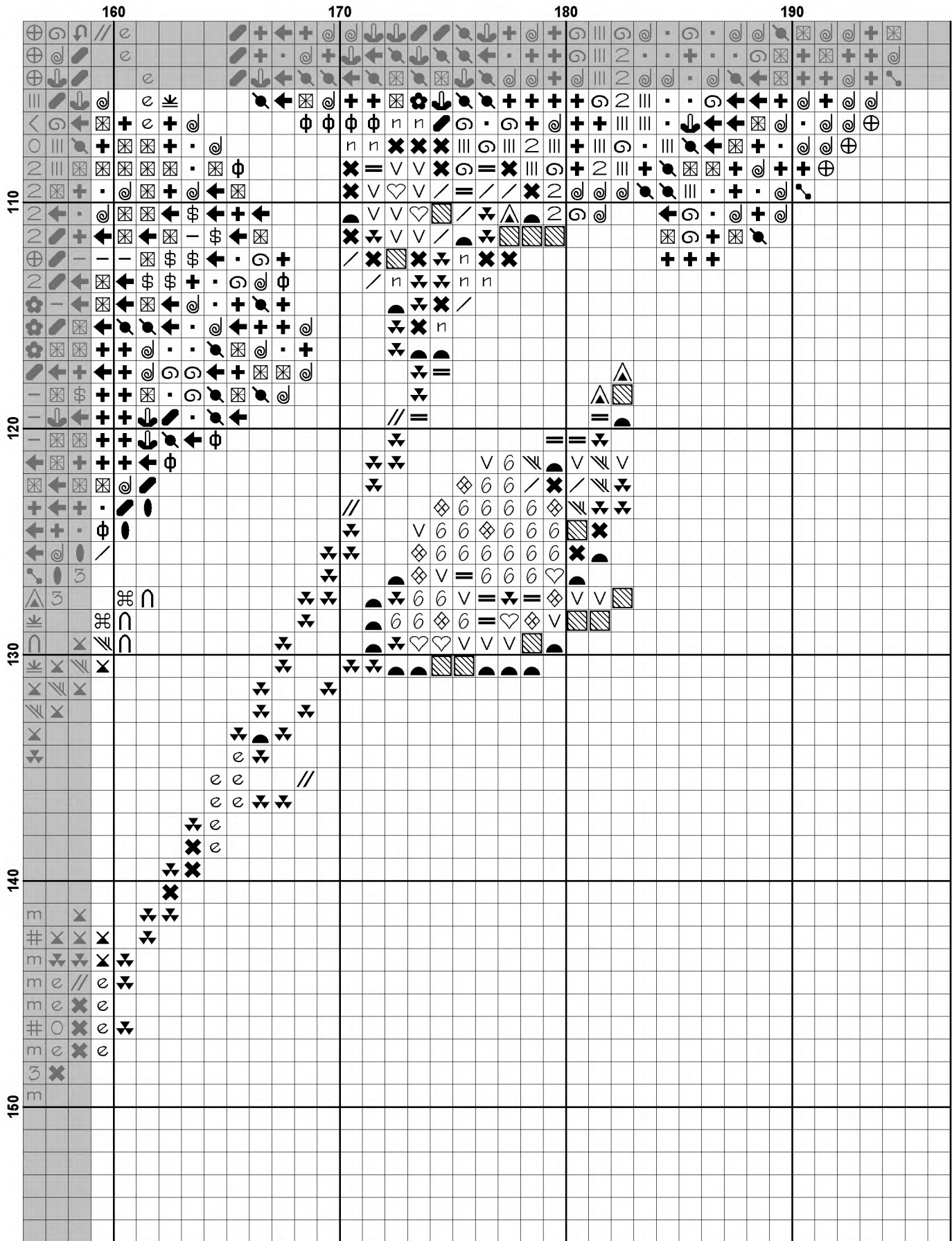


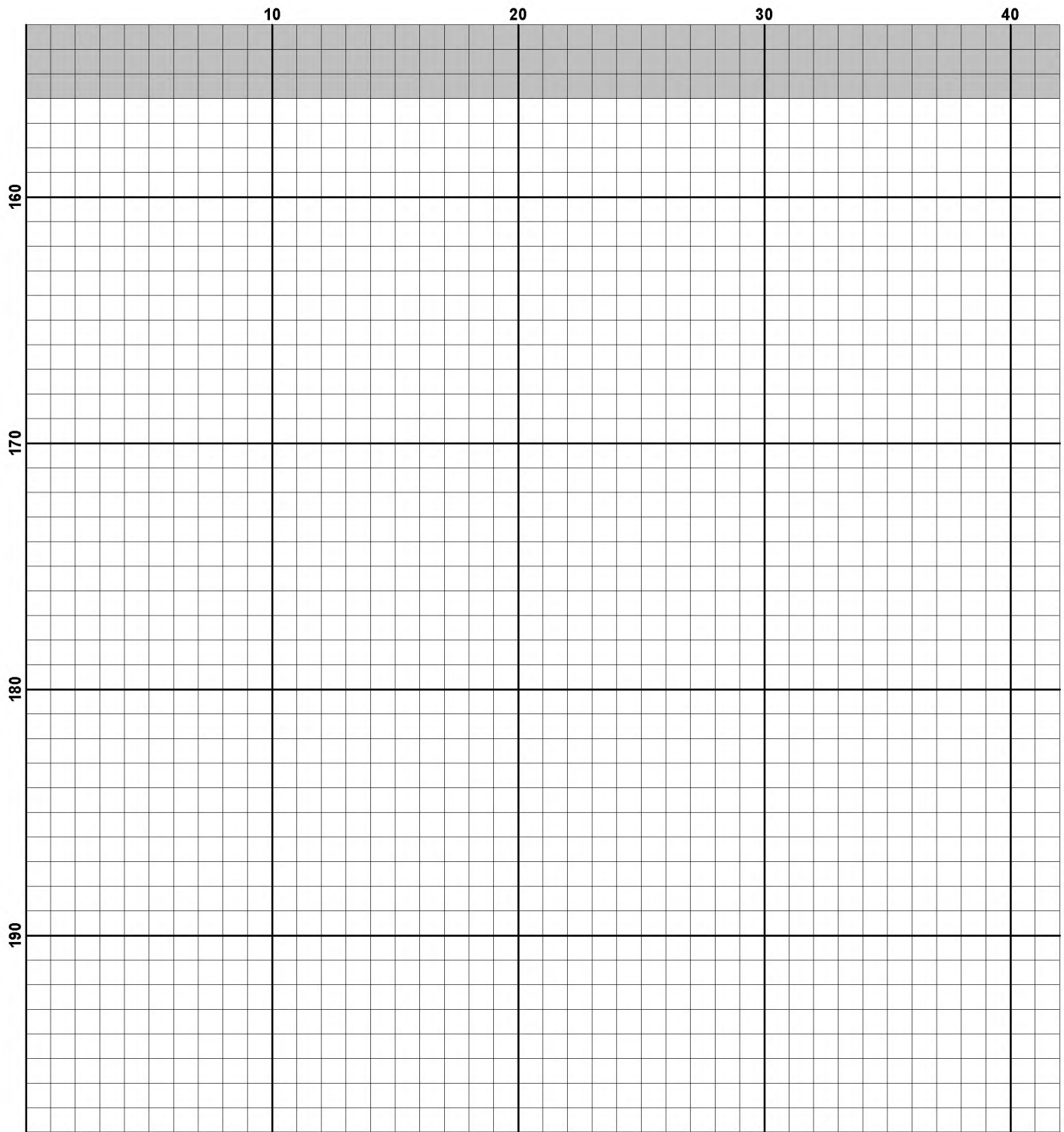


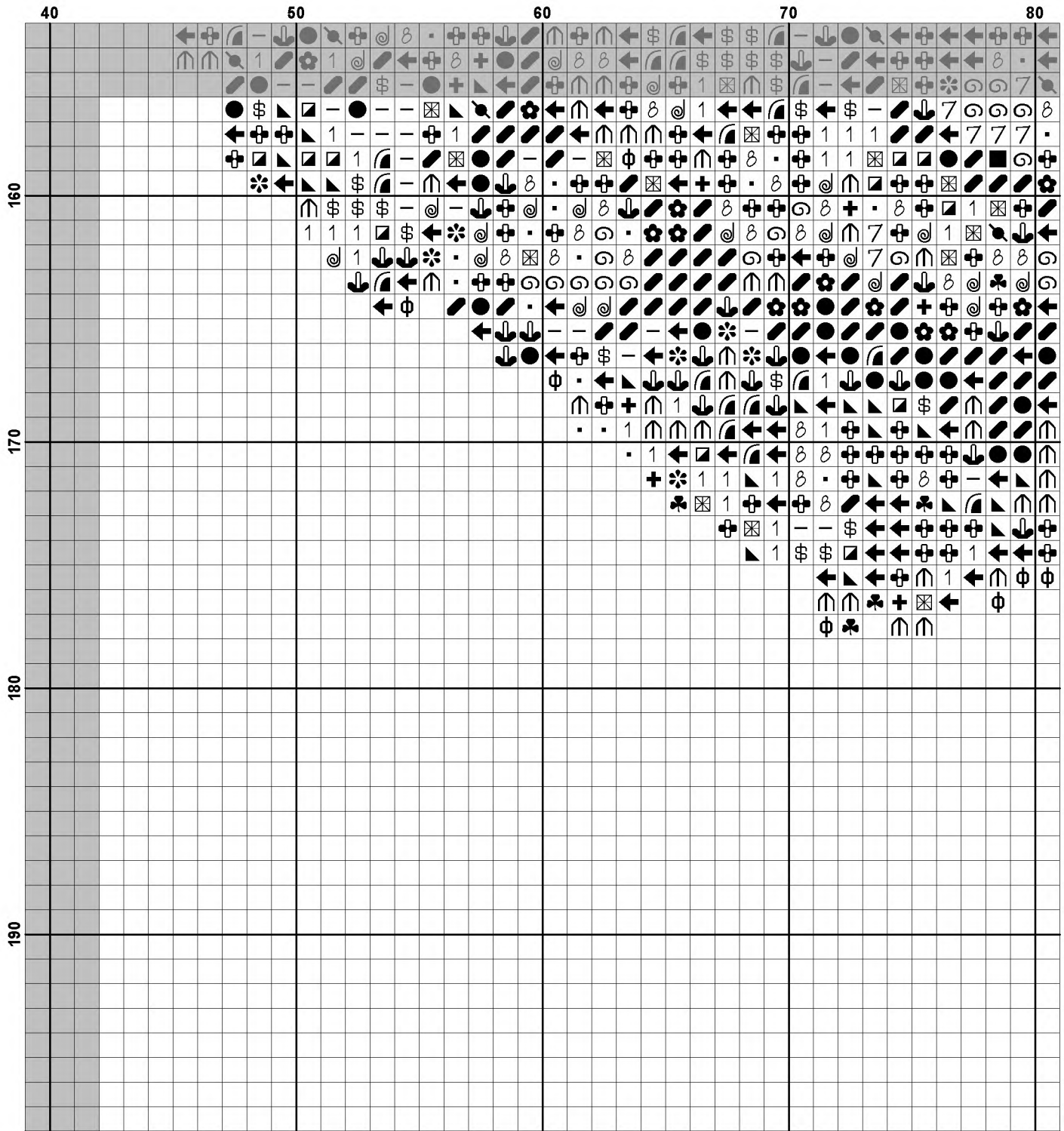


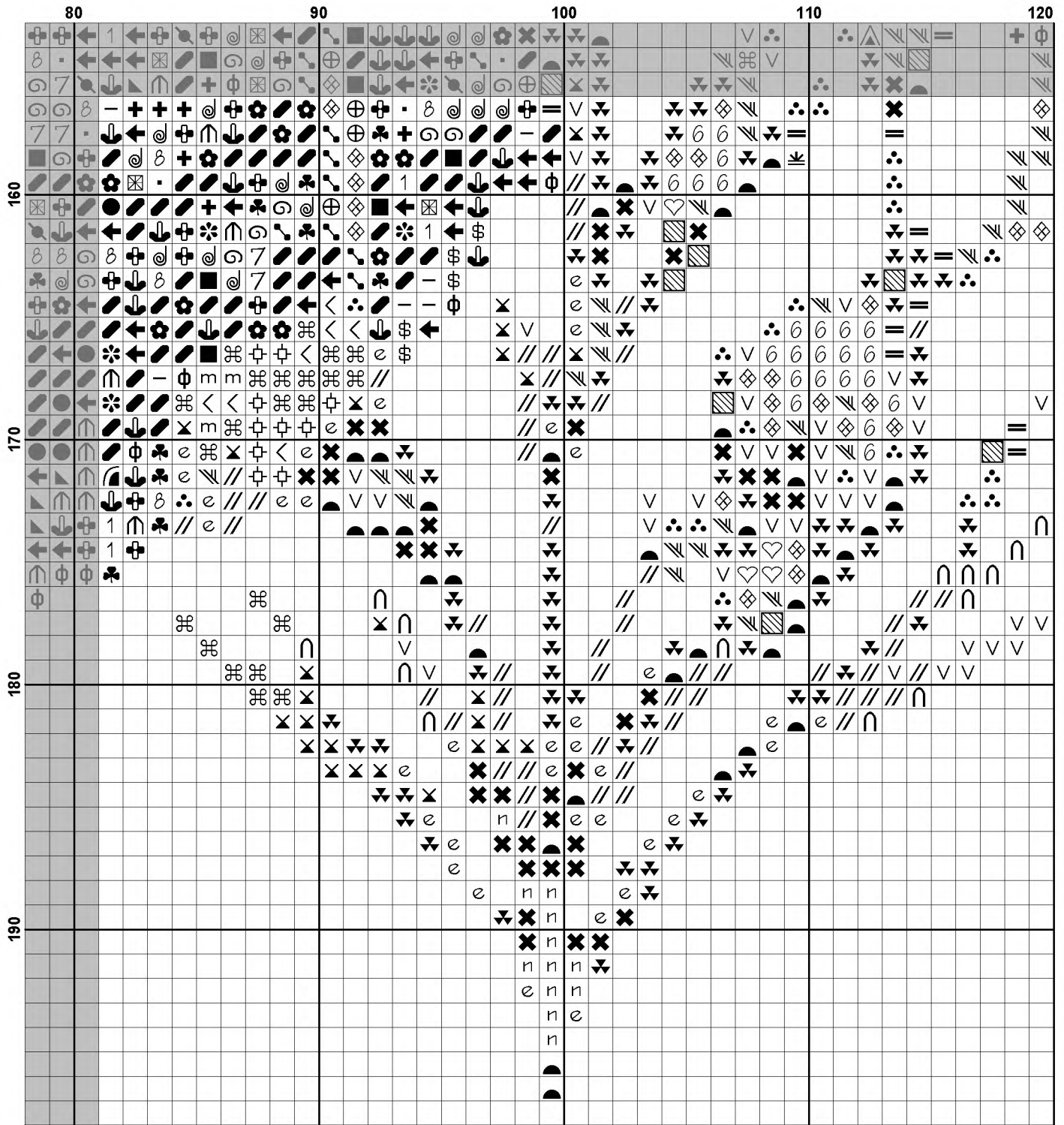


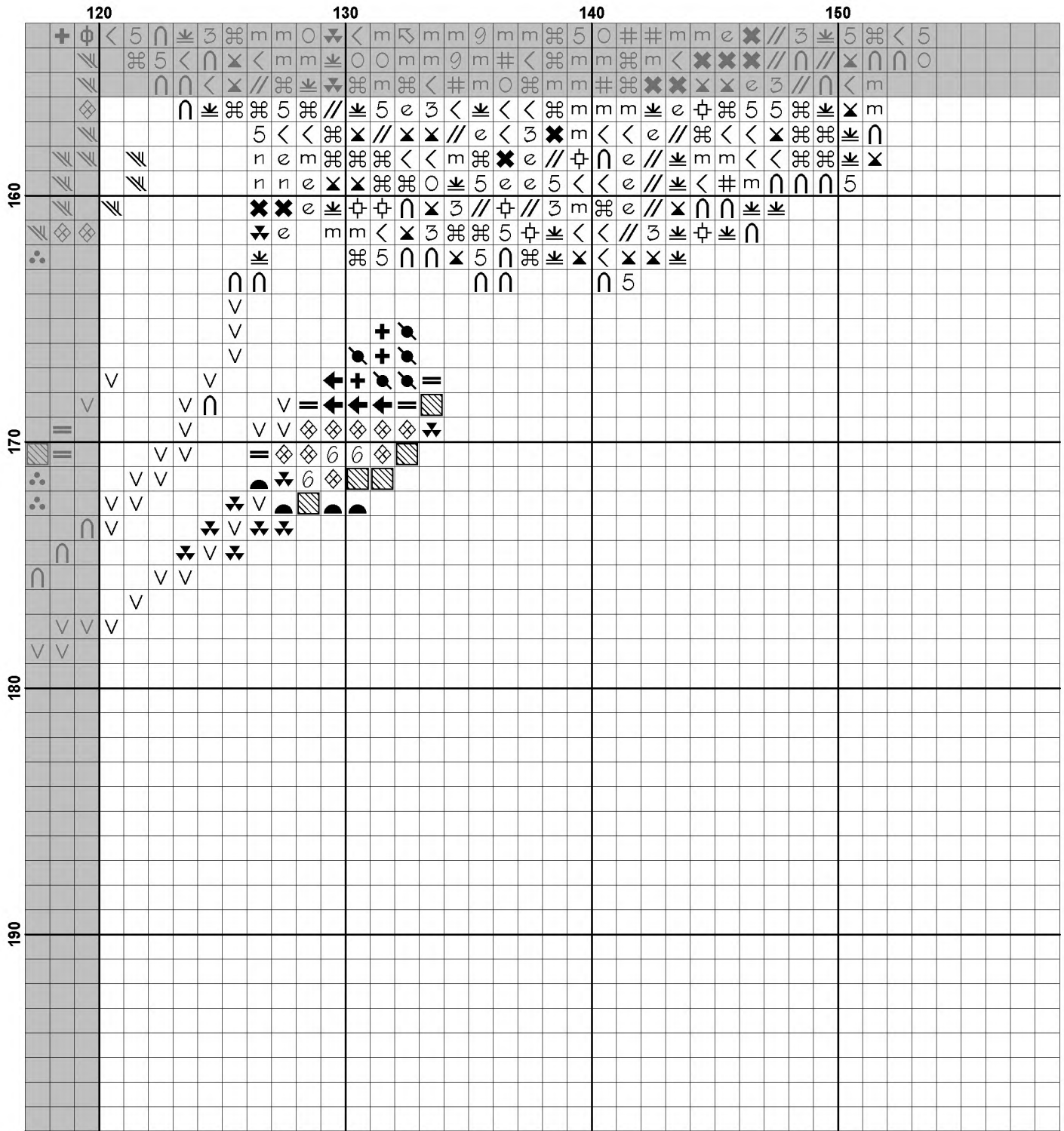


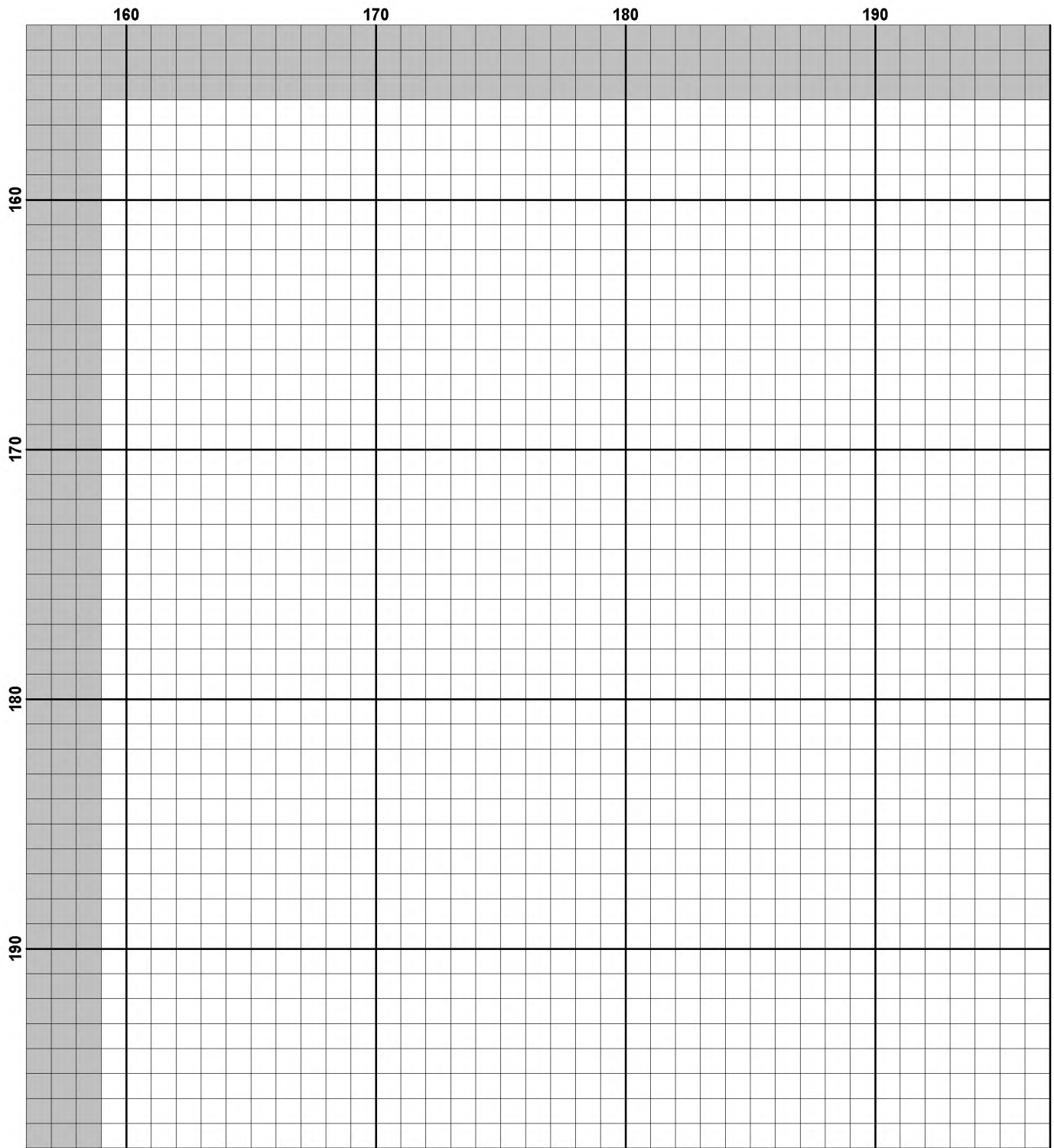












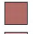




















Pattern Name: Mini Carnations Heart
Designed By: Artwork by Tereena Clarke
Company: Artecy Cross Stitch
Copyright: Copyright Artecy Cross Stitch. All rights Reserved.
Fabric: Aida 14, White
 195w X 196h Stitches
Size(s): 14 Count, 13-7/8w X 14h in
 16 Count, 12-1/8w X 12-1/4h in
 18 Count, 10-3/4w X 10-7/8h in

Floss Used for Full Stitches:

| Symbol | Strands | Type | Number | Color |
|--------|---------|------|--------|--------------------|
| | 2 | DMC | 152 | Shell Pink-MD LT |
| | 2 | DMC | 169 | Pewter-LT |
| | 2 | DMC | 320 | Pistachio Green-MD |
| | 2 | DMC | 321 | Christmas Red |
| | 2 | DMC | 326 | Rose-VY DK |
| | 2 | DMC | 349 | Coral-DK |
| | 2 | DMC | 350 | Coral-MD |
| | 2 | DMC | 351 | Coral |
| | 2 | DMC | 352 | Coral-LT |
| | 2 | DMC | 353 | Peach |
| | 2 | DMC | 355 | Terra Cotta-DK |
| | 2 | DMC | 367 | Pistachio Green-DK |
| | 2 | DMC | 368 | Pistachio Green-LT |
| | 2 | DMC | 402 | Mahogany-VY LT |
| | 2 | DMC | 414 | Steel Gray-DK |
| | 2 | DMC | 415 | Pearl Gray |
| | 2 | DMC | 498 | Christmas Red-DK |
| | 2 | DMC | 500 | Blue Green-VY DK |
| | 2 | DMC | 524 | Fern Green-VY LT |
| | 2 | DMC | 535 | Ash Gray-VY LT |
| | 2 | DMC | 644 | Beige Gray-MD |
| | 2 | DMC | 647 | Beaver Gray-MD |
| | 2 | DMC | 677 | Old Gold-VY LT |
| | 2 | DMC | 762 | Pearl Gray-VY LT |
| | 2 | DMC | 772 | Yellow Green-VY LT |
| | 2 | DMC | 814 | Garnet-DK |
| | 2 | DMC | 817 | Coral Red-VY DK |
| | 2 | DMC | 819 | Baby Pink-LT |
| | 2 | DMC | 894 | Carnation-VY LT |
| | 2 | DMC | 900 | Burnt Orange-DK |
| | 2 | DMC | 922 | Copper-LT |
| | 2 | DMC | 924 | Gray Green--VY DK |
| | 2 | DMC | 927 | Gray Green-LT |
| | 2 | DMC | 928 | Gray Green-VY LT |
| | 2 | DMC | 951 | Tawny-LT |
| | 2 | DMC | 961 | Dusty Rose-DK |
| | 2 | DMC | 962 | Dusty Rose-MD |
| | 2 | DMC | 966 | Baby Green-MD |
| | 2 | DMC | 3052 | Green Gray-MD |
| | 2 | DMC | 3072 | Beaver Gray-VY LT |
| | 2 | DMC | 3326 | Rose-LT |
| | 2 | DMC | 3328 | Salmon-DK |
| | 2 | DMC | 3346 | Hunter Green |
| | 2 | DMC | 3348 | Yellow Green-LT |
| | 2 | DMC | 3350 | Dusty Rose-UL DK |

| Symbol | Strands | Type | Number | Color |
|--|---------|------|----------|--------------------|
|  | | 2 | DMC 3689 | Mauve-LT |
|  | ▣ | 2 | DMC 3705 | Melon-DK |
|  | ⊕ | 2 | DMC 3712 | Salmon-MD |
|  | 2 | 2 | DMC 3713 | Salmon-VY LT |
|  | ⊖ | 2 | DMC 3722 | Shell Pink-MD |
|  | ⊕ | 2 | DMC 3727 | Antique Mauve-LT |
|  | m | 2 | DMC 3756 | Baby Blue-UL VY LT |
|  | ↖ | 2 | DMC 3770 | Tawny-VY LT |
|  | ♣ | 2 | DMC 3778 | Terra Cotta-LT |
|  | H | 2 | DMC 3801 | Christmas Red-LT |
|  | ⊕ | 2 | DMC 3813 | Blue Green-LT |
|  | e | 2 | DMC 3815 | Celadon Green-DK |
|  | // | 2 | DMC 3816 | Celadon Green-MD |
|  | × | 2 | DMC 3817 | Celadon Green-LT |
|  | ✻ | 2 | DMC 3830 | Terra Cotta-MD |
|  | ← | 2 | DMC 3831 | Raspberry-DK |
|  | ⊗ | 2 | DMC 3832 | Raspberry-MD |
|  | × | 2 | DMC 3856 | Mahogany-UL VY LT |
|  | ● | 2 | DMC 3860 | Cocoa |
|  | ↶ | 2 | DMC 3861 | Cocoa-LT |
|  | # | 2 | DMC 3865 | Winter White |

Notes:

The middle of this pattern can be found on page 8 and is 99 stitches across and 99 stitches down.

Pattern layout using page numbers in top left.

```

1  2  3  4  5
6  7  8  9 10
11 12 13 14 15
16 17 18 19 20
















```

Usage Summary

Strands Per Skein: 6

Skein Length: 313.0 in

| Type | Number | Full | Half | Quarter | Petite | Back(in) | Str(in) | Spec(in) | French | Bead | Skein Est. |
|----------|--------|------|------|---------|--------|----------|---------|----------|--------|------|------------|
| DMC 152 | 152 | 246 | 0 | 0 | 0 | 0.0 | 0.0 | 0.0 | 0 | 0 | 1.000 |
| DMC 169 | 169 | 126 | 0 | 0 | 0 | 0.0 | 0.0 | 0.0 | 0 | 0 | 1.000 |
| DMC 320 | 320 | 356 | 0 | 0 | 0 | 0.0 | 0.0 | 0.0 | 0 | 0 | 1.000 |
| DMC 321 | 321 | 853 | 0 | 0 | 0 | 0.0 | 0.0 | 0.0 | 0 | 0 | 1.000 |
| DMC 326 | 326 | 602 | 0 | 0 | 0 | 0.0 | 0.0 | 0.0 | 0 | 0 | 1.000 |
| DMC 349 | 349 | 581 | 0 | 0 | 0 | 0.0 | 0.0 | 0.0 | 0 | 0 | 1.000 |
| DMC 350 | 350 | 411 | 0 | 0 | 0 | 0.0 | 0.0 | 0.0 | 0 | 0 | 1.000 |
| DMC 351 | 351 | 358 | 0 | 0 | 0 | 0.0 | 0.0 | 0.0 | 0 | 0 | 1.000 |
| DMC 352 | 352 | 603 | 0 | 0 | 0 | 0.0 | 0.0 | 0.0 | 0 | 0 | 1.000 |
| DMC 353 | 353 | 809 | 0 | 0 | 0 | 0.0 | 0.0 | 0.0 | 0 | 0 | 1.000 |
| DMC 355 | 355 | 88 | 0 | 0 | 0 | 0.0 | 0.0 | 0.0 | 0 | 0 | 1.000 |
| DMC 367 | 367 | 202 | 0 | 0 | 0 | 0.0 | 0.0 | 0.0 | 0 | 0 | 1.000 |
| DMC 368 | 368 | 251 | 0 | 0 | 0 | 0.0 | 0.0 | 0.0 | 0 | 0 | 1.000 |
| DMC 402 | 402 | 293 | 0 | 0 | 0 | 0.0 | 0.0 | 0.0 | 0 | 0 | 1.000 |
| DMC 414 | 414 | 69 | 0 | 0 | 0 | 0.0 | 0.0 | 0.0 | 0 | 0 | 1.000 |
| DMC 415 | 415 | 176 | 0 | 0 | 0 | 0.0 | 0.0 | 0.0 | 0 | 0 | 1.000 |
| DMC 498 | 498 | 1418 | 0 | 0 | 0 | 0.0 | 0.0 | 0.0 | 0 | 0 | 1.000 |
| DMC 500 | 500 | 90 | 0 | 0 | 0 | 0.0 | 0.0 | 0.0 | 0 | 0 | 1.000 |
| DMC 524 | 524 | 164 | 0 | 0 | 0 | 0.0 | 0.0 | 0.0 | 0 | 0 | 1.000 |
| DMC 535 | 535 | 135 | 0 | 0 | 0 | 0.0 | 0.0 | 0.0 | 0 | 0 | 1.000 |
| DMC 644 | 644 | 258 | 0 | 0 | 0 | 0.0 | 0.0 | 0.0 | 0 | 0 | 1.000 |
| DMC 647 | 647 | 106 | 0 | 0 | 0 | 0.0 | 0.0 | 0.0 | 0 | 0 | 1.000 |
| DMC 677 | 677 | 83 | 0 | 0 | 0 | 0.0 | 0.0 | 0.0 | 0 | 0 | 1.000 |
| DMC 762 | 762 | 281 | 0 | 0 | 0 | 0.0 | 0.0 | 0.0 | 0 | 0 | 1.000 |
| DMC 772 | 772 | 183 | 0 | 0 | 0 | 0.0 | 0.0 | 0.0 | 0 | 0 | 1.000 |
| DMC 814 | 814 | 953 | 0 | 0 | 0 | 0.0 | 0.0 | 0.0 | 0 | 0 | 1.000 |
| DMC 817 | 817 | 362 | 0 | 0 | 0 | 0.0 | 0.0 | 0.0 | 0 | 0 | 1.000 |
| DMC 819 | 819 | 1296 | 0 | 0 | 0 | 0.0 | 0.0 | 0.0 | 0 | 0 | 1.000 |
| DMC 894 | 894 | 451 | 0 | 0 | 0 | 0.0 | 0.0 | 0.0 | 0 | 0 | 1.000 |
| DMC 900 | 900 | 288 | 0 | 0 | 0 | 0.0 | 0.0 | 0.0 | 0 | 0 | 1.000 |
| DMC 922 | 922 | 233 | 0 | 0 | 0 | 0.0 | 0.0 | 0.0 | 0 | 0 | 1.000 |
| DMC 924 | 924 | 274 | 0 | 0 | 0 | 0.0 | 0.0 | 0.0 | 0 | 0 | 1.000 |
| DMC 927 | 927 | 154 | 0 | 0 | 0 | 0.0 | 0.0 | 0.0 | 0 | 0 | 1.000 |
| DMC 928 | 928 | 416 | 0 | 0 | 0 | 0.0 | 0.0 | 0.0 | 0 | 0 | 1.000 |
| DMC 951 | 951 | 398 | 0 | 0 | 0 | 0.0 | 0.0 | 0.0 | 0 | 0 | 1.000 |
| DMC 961 | 961 | 745 | 0 | 0 | 0 | 0.0 | 0.0 | 0.0 | 0 | 0 | 1.000 |
| DMC 962 | 962 | 813 | 0 | 0 | 0 | 0.0 | 0.0 | 0.0 | 0 | 0 | 1.000 |
| DMC 966 | 966 | 247 | 0 | 0 | 0 | 0.0 | 0.0 | 0.0 | 0 | 0 | 1.000 |
| DMC 3052 | 3052 | 198 | 0 | 0 | 0 | 0.0 | 0.0 | 0.0 | 0 | 0 | 1.000 |
| DMC 3072 | 3072 | 409 | 0 | 0 | 0 | 0.0 | 0.0 | 0.0 | 0 | 0 | 1.000 |
| DMC 3326 | 3326 | 770 | 0 | 0 | 0 | 0.0 | 0.0 | 0.0 | 0 | 0 | 1.000 |
| DMC 3328 | 3328 | 323 | 0 | 0 | 0 | 0.0 | 0.0 | 0.0 | 0 | 0 | 1.000 |
| DMC 3346 | 3346 | 108 | 0 | 0 | 0 | 0.0 | 0.0 | 0.0 | 0 | 0 | 1.000 |
| DMC 3348 | 3348 | 116 | 0 | 0 | 0 | 0.0 | 0.0 | 0.0 | 0 | 0 | 1.000 |
| DMC 3350 | 3350 | 439 | 0 | 0 | 0 | 0.0 | 0.0 | 0.0 | 0 | 0 | 1.000 |
| DMC 3689 | 3689 | 375 | 0 | 0 | 0 | 0.0 | 0.0 | 0.0 | 0 | 0 | 1.000 |
| DMC 3705 | 3705 | 279 | 0 | 0 | 0 | 0.0 | 0.0 | 0.0 | 0 | 0 | 1.000 |
| DMC 3712 | 3712 | 533 | 0 | 0 | 0 | 0.0 | 0.0 | 0.0 | 0 | 0 | 1.000 |
| DMC 3713 | 3713 | 865 | 0 | 0 | 0 | 0.0 | 0.0 | 0.0 | 0 | 0 | 1.000 |
| DMC 3722 | 3722 | 312 | 0 | 0 | 0 | 0.0 | 0.0 | 0.0 | 0 | 0 | 1.000 |
| DMC 3727 | 3727 | 341 | 0 | 0 | 0 | 0.0 | 0.0 | 0.0 | 0 | 0 | 1.000 |

| Type | Number | Full | Half | Quarter | Petite | Back(in) | Str(in) | Spec(in) | French | Bead | Skein | Est. |
|--|--------|------|------|---------|--------|----------|---------|----------|--------|------|-------|------|
|  DMC | 3756 | 366 | 0 | 0 | 0 | 0.0 | 0.0 | 0.0 | 0 | 0 | 1.000 | |
|  DMC | 3770 | 518 | 0 | 0 | 0 | 0.0 | 0.0 | 0.0 | 0 | 0 | 1.000 | |
|  DMC | 3778 | 314 | 0 | 0 | 0 | 0.0 | 0.0 | 0.0 | 0 | 0 | 1.000 | |
|  DMC | 3801 | 262 | 0 | 0 | 0 | 0.0 | 0.0 | 0.0 | 0 | 0 | 1.000 | |
|  DMC | 3813 | 104 | 0 | 0 | 0 | 0.0 | 0.0 | 0.0 | 0 | 0 | 1.000 | |
|  DMC | 3815 | 208 | 0 | 0 | 0 | 0.0 | 0.0 | 0.0 | 0 | 0 | 1.000 | |
|  DMC | 3816 | 186 | 0 | 0 | 0 | 0.0 | 0.0 | 0.0 | 0 | 0 | 1.000 | |
|  DMC | 3817 | 265 | 0 | 0 | 0 | 0.0 | 0.0 | 0.0 | 0 | 0 | 1.000 | |
|  DMC | 3830 | 175 | 0 | 0 | 0 | 0.0 | 0.0 | 0.0 | 0 | 0 | 1.000 | |
|  DMC | 3831 | 956 | 0 | 0 | 0 | 0.0 | 0.0 | 0.0 | 0 | 0 | 1.000 | |
|  DMC | 3832 | 666 | 0 | 0 | 0 | 0.0 | 0.0 | 0.0 | 0 | 0 | 1.000 | |
|  DMC | 3856 | 288 | 0 | 0 | 0 | 0.0 | 0.0 | 0.0 | 0 | 0 | 1.000 | |
|  DMC | 3860 | 153 | 0 | 0 | 0 | 0.0 | 0.0 | 0.0 | 0 | 0 | 1.000 | |
|  DMC | 3861 | 211 | 0 | 0 | 0 | 0.0 | 0.0 | 0.0 | 0 | 0 | 1.000 | |
|  DMC | 3865 | 454 | 0 | 0 | 0 | 0.0 | 0.0 | 0.0 | 0 | 0 | 1.000 | |